



Diocesan Safeguarding Team

Grace Fagan-Stewart
Head of Safeguarding and Diocesan Safeguarding Officer

Safeguarding At Its Best

All stand together

“

When you
know
better,
you **DO**
BETTER.

-Maya Angelou



THANK YOU

- From DST To You





Diocesan Safeguarding Team



Grace Fagan-Stewart
Head of Safeguarding



Andy Munro
Assistant Head of Safeguarding



Bridgett Fenton
Diocesan Safeguarding Advisor



Craig Norman
Training Coordinator



Nick Sherratt
*Safeguarding Compliance/ Safer
Recruitment Lead*

: europe.safeguarding@churchofengland.org

: +44 (0) 7464 544 715

CoFE NATIONAL CONTEXT

- Changes





DSA/DSO

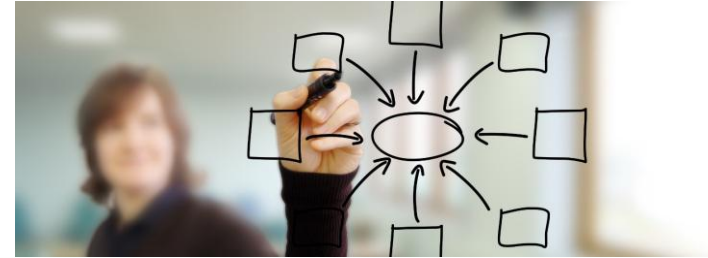
"Canon 30" refers to an amended church canon, specifically in the Church of England, that addresses the appointment and responsibilities of the Diocesan Safeguarding Officer.

The amendment, in the form of Amending Canon No. 42, mandates that bishops must appoint a DSO to oversee safeguarding within the diocese. Canon C 30 is the relevant canon that has been updated to strengthen the requirements for the DSO role.

The Diocesan Safeguarding Officer (DSO) is **responsible for advising, supporting and holding to account those with specific safeguarding responsibilities, including the Bishop, senior staff, those responsible for the care of children and vulnerable adults, as well as the wider church, where safeguarding is everyone's responsibility.**

Published 2023

The Church of England National Safeguarding Standards and Quality Assurance Framework

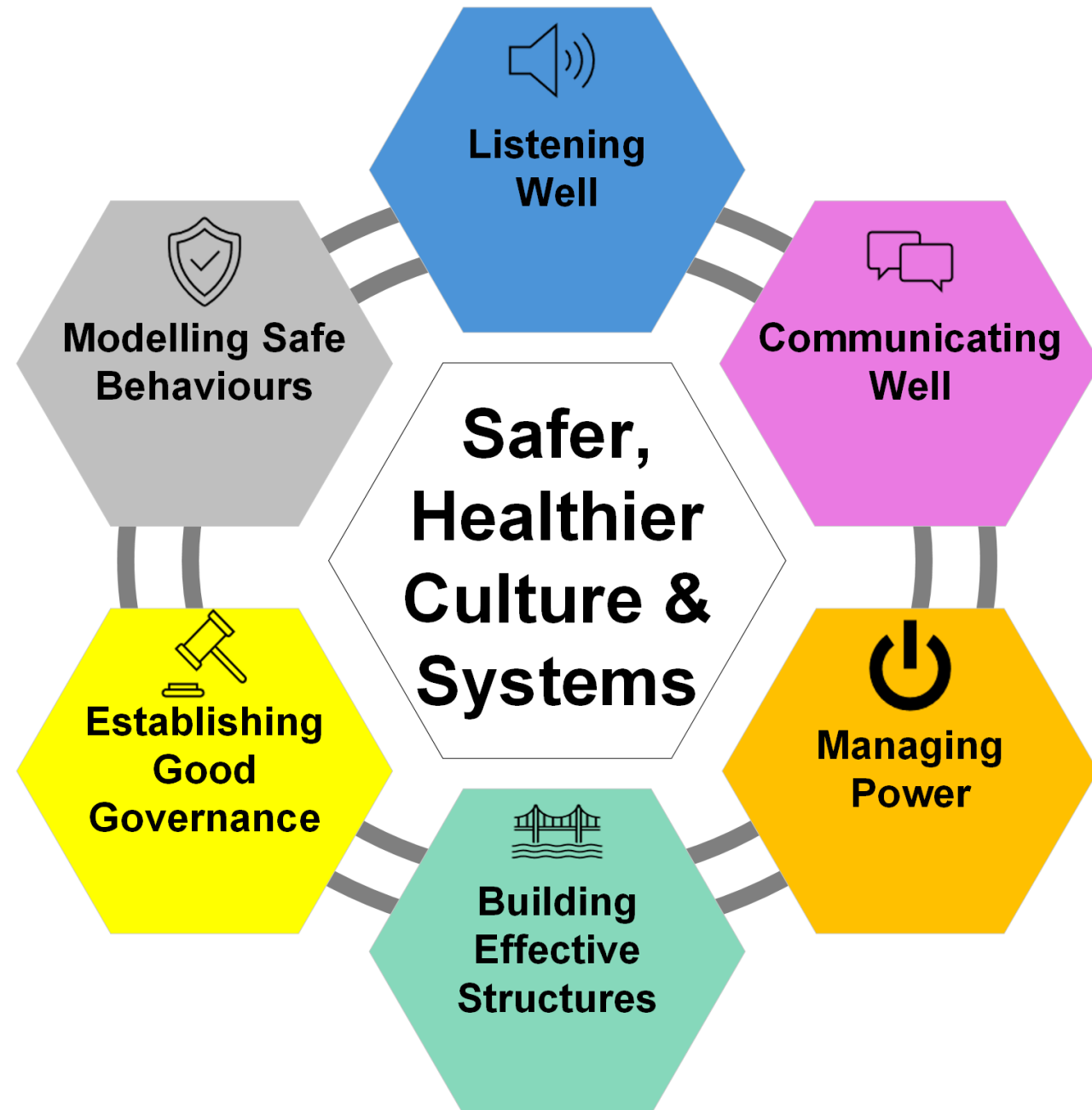


Diocese in Europe

Church of England Safeguarding Standards

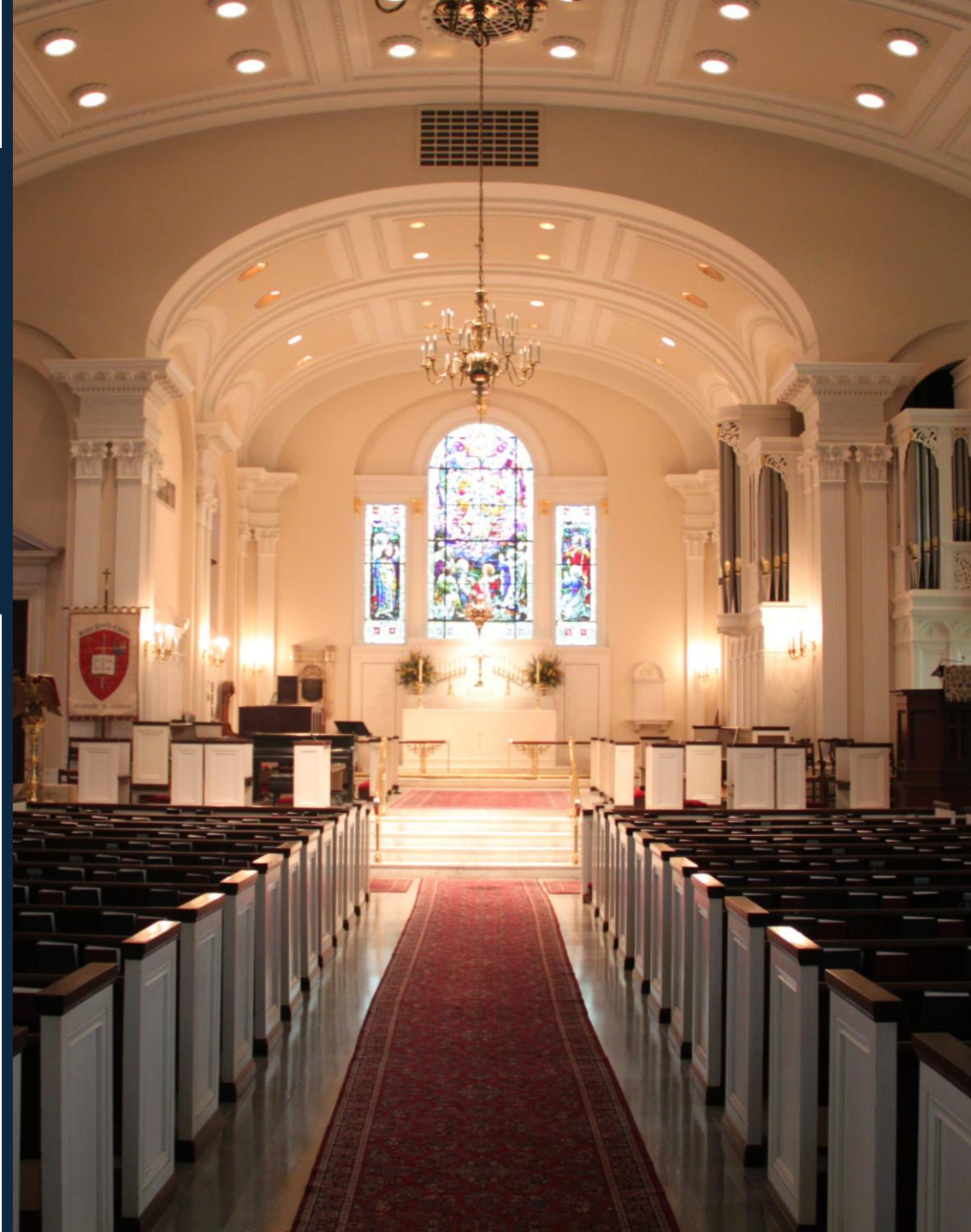
Standard	1	CULTURE, LEADERSHIP AND CAPACITY Church bodies have safe and healthy cultures, effective leadership, resourcing and scrutiny arrangements necessary to deliver high-quality safeguarding practices and outcomes.
Standard	2	PREVENTION Church bodies have in place a planned range of measures which together are effective in preventing abuse in their context.
Standard	3	RECOGNISING, ASSESSING AND MANAGING RISK Risk assessments, safety plans and associated processes are of a high quality and result in positive outcomes. The assessment and management of risk is underpinned by effective partnership working.
Standard	4	VICTIMS AND SURVIVORS Victims and survivors experience the timeliness and quality of Church bodies' responses to disclosures, and their subsequent support, as positively meeting their needs, including their search for justice and helping their healing process.
Standard	5	LEARNING, SUPERVISION AND SUPPORT All those engaged in safeguarding-related activity in Church bodies receive the type and level of learning, professional development, support and supervision necessary to respond to safeguarding situations, victims and survivors, and respondents, effectively.

Understanding church culture

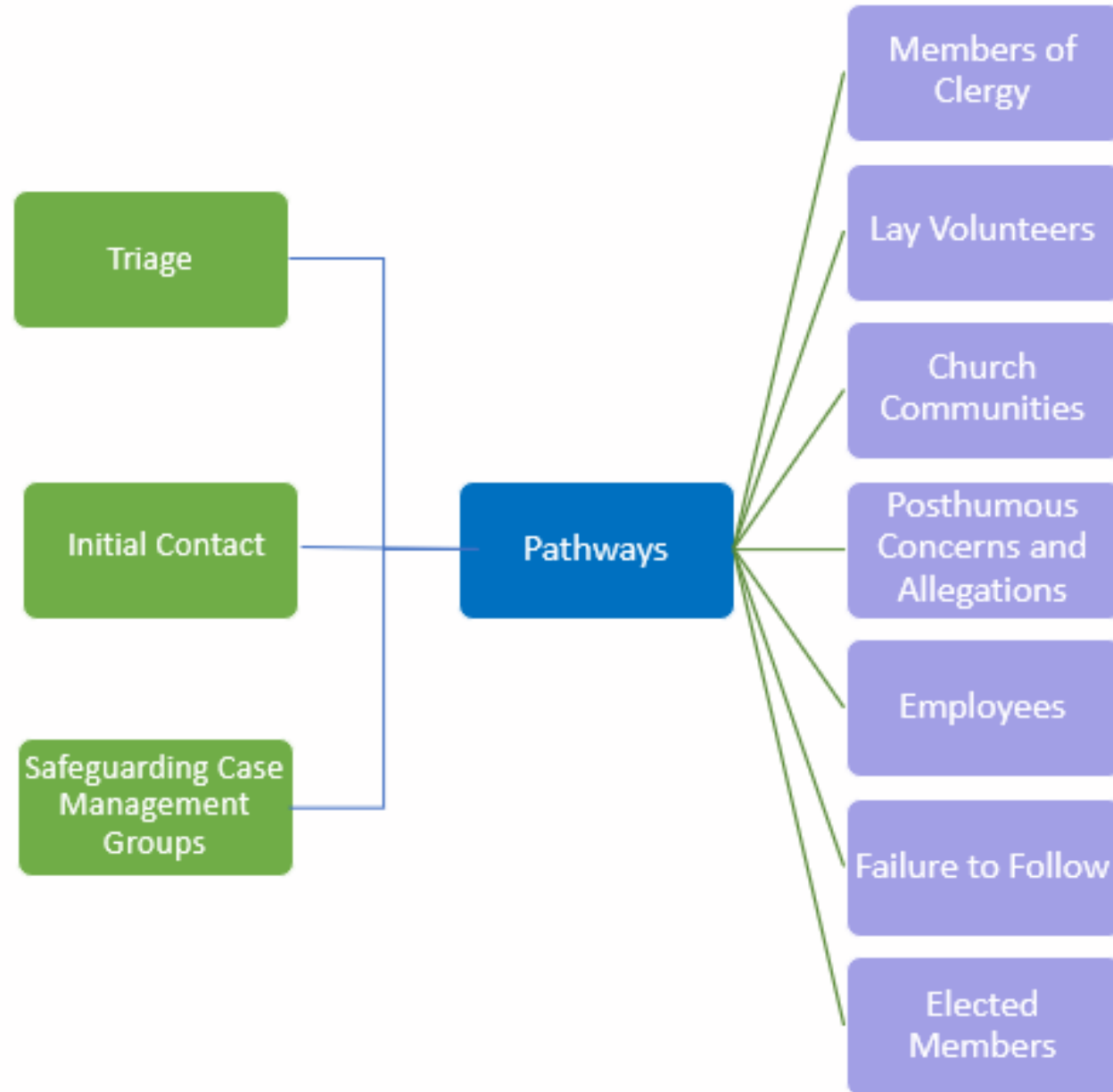


MANAGING ALLEGATIONS CODE OF PRACTICE

September 2025



Pathway Model





Church of England Independent Audits

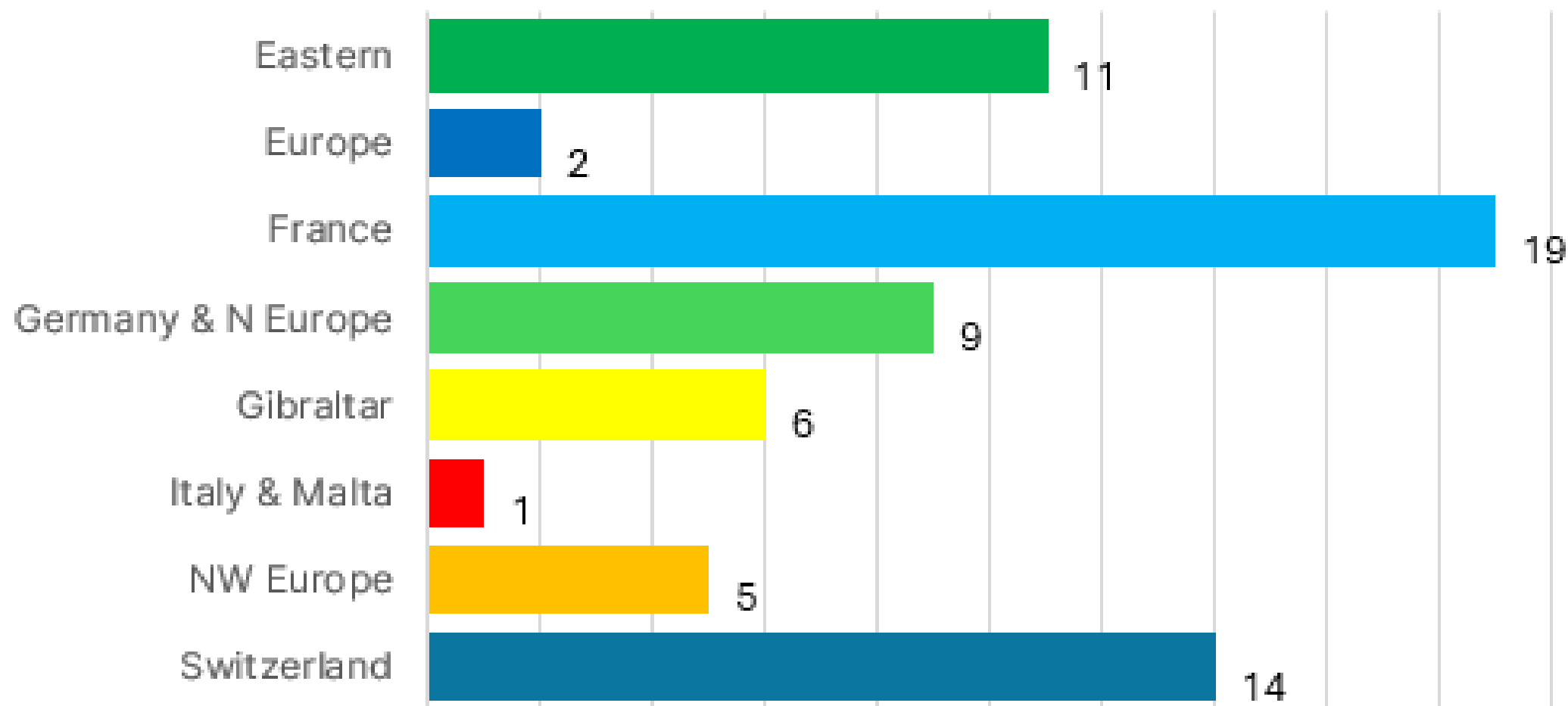
- Diocese in Europe INEQE AUDIT is coming
- Preparation commences January 2026
- Surveys and evidence submissions commence in January 2027
- Fieldwork commences October 2027
 - **Priority:** Every Chaplaincy MUST be on the DASHBOARD

DIOCESAN OVERVIEW

- Chaplaincy Engagement



Leadership course completions by archdeaconry - Q2 2025

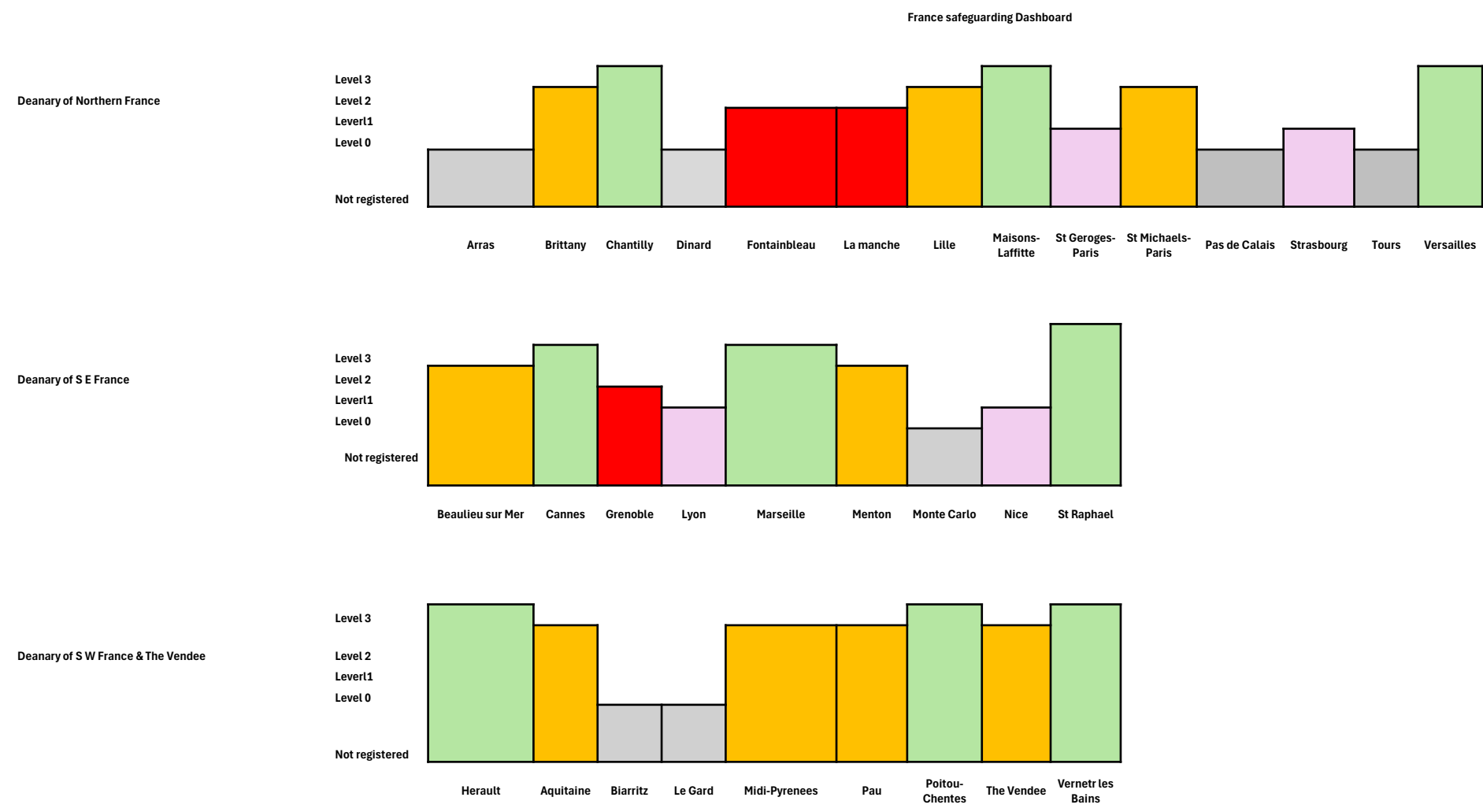


ARCHDEACONRY CONTEXT

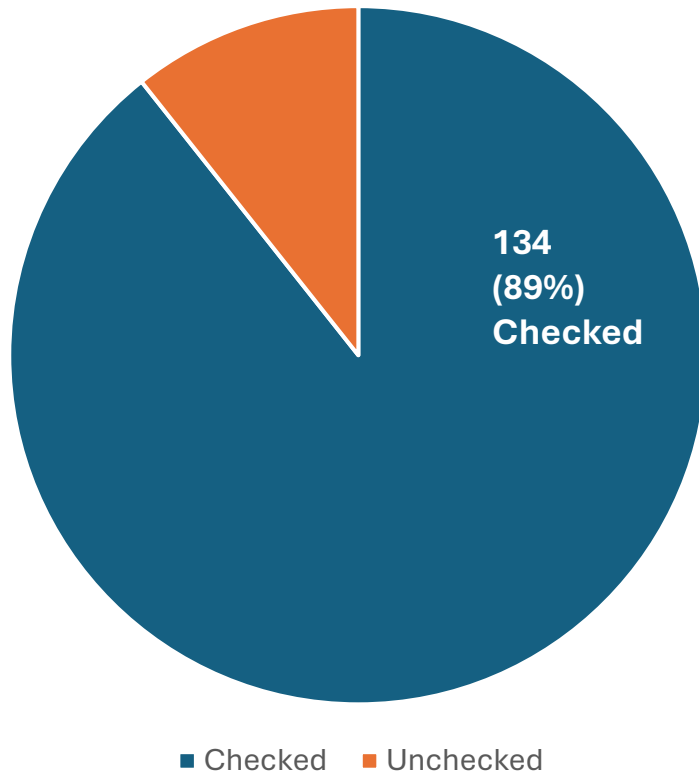
- DASHBOARD
- Churchwardens
- CSOs



Archdeaconry France DASHBOARD



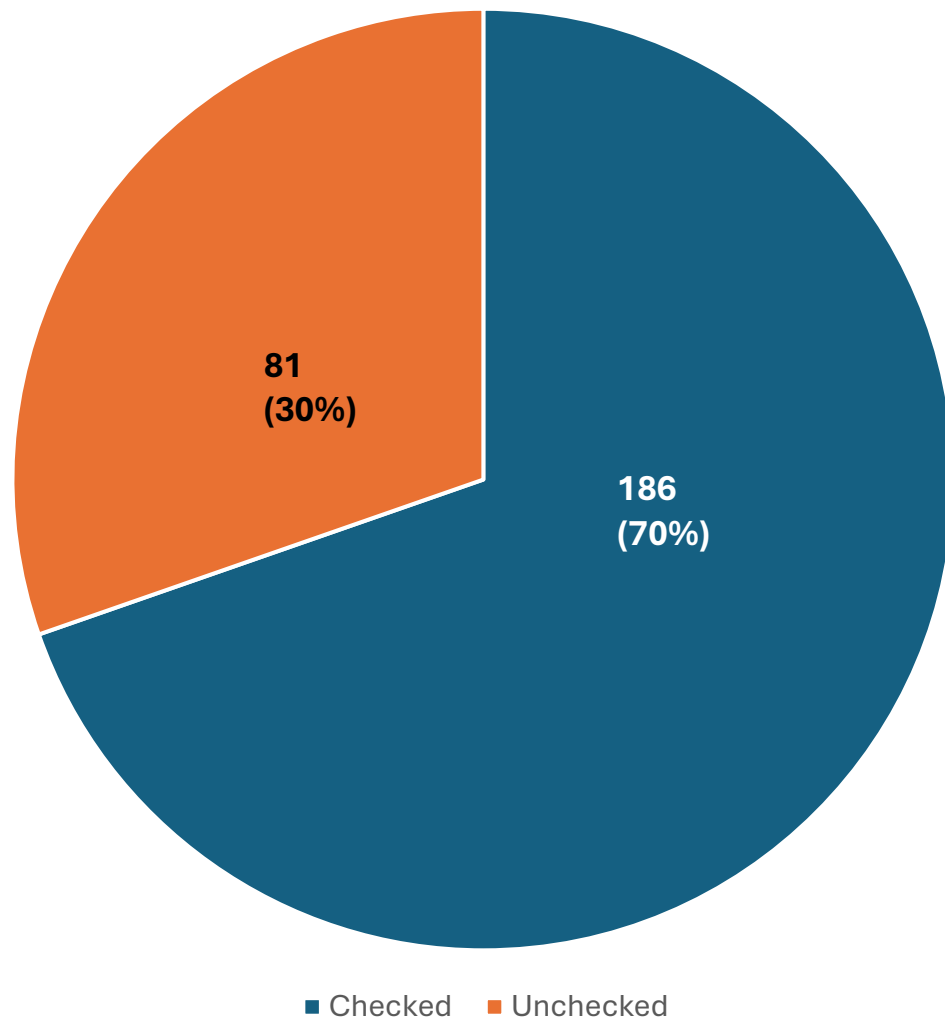
Chaplaincy Safeguarding Officer (inc. Asst CSO) compliance with safeguarding checks, Diocese-wide, October 2025 (CMS)



CSO compliance with Safeguarding Checks (Diocese-wide, Oct 2025):

- Total Population: 150
- CSOs with completed safeguarding checks: 134
- CSOs currently unchecked: 16
- All those whose checks are incomplete, have expired or are due for renewal will be contacted by the Safeguarding Administrator

Churchwardens compliance with safeguarding checks,
Diocese-wide, Oct 2025 (CMS)



Churchwarden Compliance with
Safeguarding Checks

(Diocese-wide, Oct 2025):

- Total Population: 267
- CWs with completed safeguarding checks: 186 (70%)
- CWs currently unchecked: 81
- All those whose checks are incomplete, have expired or are due for renewal will be contacted by the Safeguarding Administrator



**Diocese
in Europe**

Challenges

Discuss in small groups





**Diocese
in Europe**

Questions

Thank You

